



# Jaguar Affiliates Group of Michigan

Invites You to Join Us at Our 51<sup>st</sup> Annual

## Concours d'Elegance

**Saturday August 25, 2018**

The 51<sup>st</sup> Annual JAGM Concours d'Elegance will be held at:

**Olde World Canterbury Village, 2359 Joslyn Ct., Lake Orion, Michigan 48360**

<http://canterburyvillage.com/index.php>

JAGM's most prestigious event, the JCNA-sanctioned Concours d'Elegance, will be held at this small and unique old-time village. The cars will be displayed on the lawn between the shops and cottages.

### **Come and Join the FUN!**

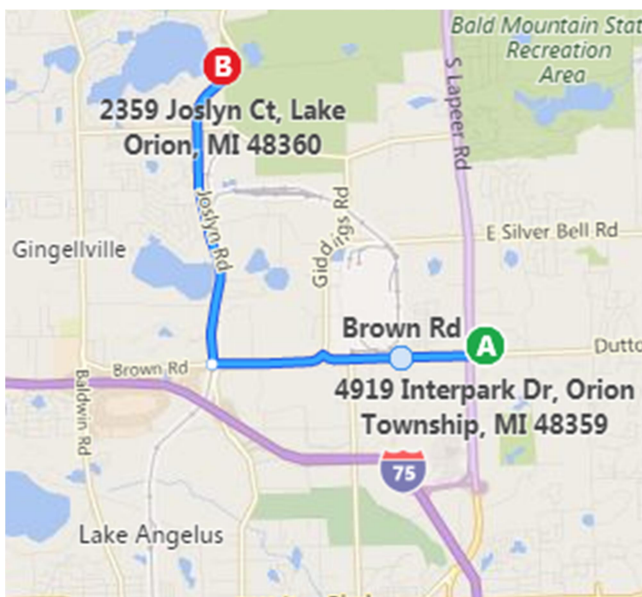
Join us and show your pride in the marque whether you have a classic, or a brand-new F-Pace. There will be formal judged events in both Championship and Driven JCNA classes. Prefer not to be judged? No problem! Come and join in the display class, where everyone can admire your car without the work!

Trailer parking is in the North Parking Lot at Canterbury Village.

Suburban JLR of Troy may have some new cars, and possibly some used cars, on display for you to check out. Plan on stopping by to view Suburban JLR's vehicle selections and offerings.

A hospitality tent will be available during the Concours for respite from the sunny weather. Bottled water will be available. There are also plenty of small shops to visit. These venues will offer you a break from the weather and will also provide options to entertain your guests.

**Lunch may be purchased at the C-Pub Bar & Grill or snacks at Yates Cider Mill.**



The **Awards Banquet** will start at **6:00 PM** in the Kings Court Castle Banquet Center at the front of the Village. A buffet meal, with cash bar, will be followed by the Awards presentations, including a slide show of the day's activities and participants.

This year's Concours d'Elegance is located on the north side of the Detroit area.

Canterbury Village is off the I-75 expressway at Exit 81 (Lapeer Road North) near the Palace, and at Exit 83, (Joslyn Road North) near the "Great Lakes Crossing" shopping mall.

# Jaguar Affiliates Group of Michigan 51<sup>st</sup> Annual Concours d'Elegance

## Event Details

### Host Hotel

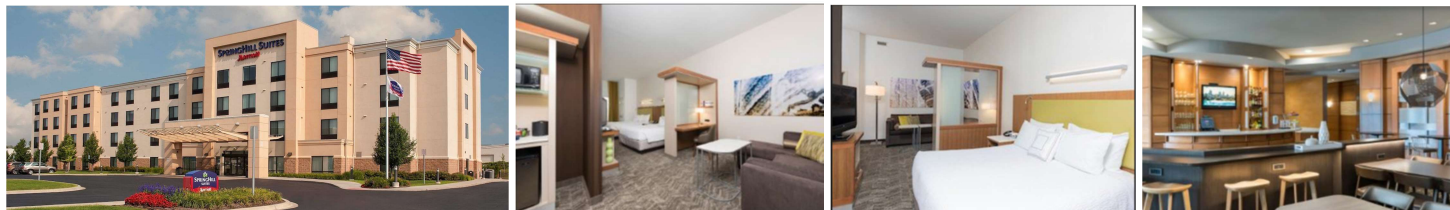
Our host hotel is the **Springhill Suites, 4919 Interpark Drive, Orion Twp., MI 48359**  
Tel: (248) 475-4700

<https://www.marriott.com/hotels/hotel-photos/dtwra-springhill-suites-detroit-auburn-hills/>

The hotel is basically on the corner of Lapeer and Dutton Roads, just 5 miles from Canterbury Village

A block of rooms is reserved for JAGM members. Room rate will be \$119 per night for 1 King bed, and \$129 per night for 2 Queen beds. Full fare rates are \$159 and \$169. **Please call the hotel direct and mention 'Jaguar Club' when making your reservation. *This is very important as they do monitor how many of our rooms we book!*** Please be careful of third party web sites that may not recognize the special rates. Continental breakfast is included and served in the morning.

A reserved parking area, trailer parking, car washing facilities and overnight security will all be available. You will also have access to indoor swimming pool and fitness center.



### Join Us for Friday Night Hospitality

A hospitality reception will be held in the hotel lobby, breakfast area and bar starting at 6:00PM. Come and meet friends old and new. A light meal will be provided, and bar service will be available. Local JAGM members are encouraged to attend and bring a dish from home to share.

### Concours d'Elegance Schedule:

- 09:00 AM** Event site opens for entrants  
All cars enter the North driveway and will pass the Registration tent followed by the OV Checks, also on the driveway, prior to reaching your judging position.
- 11:00 AM—12:00 PM** Judges Luncheon Meeting
- 12:00 PM** Rags down
- 12:00 PM** Judging begins  
Participants in Championship and Driven classes must be at their cars
- 04:00 PM** Expected release of cars by Chief Judge
- 06:00 PM** Awards buffet at the Kings Court Castle Banquet Room at Canterbury Village

Questions, comments or concerns? Contact Concours Chairman Bob Matejek at [ConcoursChair@jagm.org](mailto:ConcoursChair@jagm.org) or call (248) 842-1046

|                  |  |
|------------------|--|
| Name             |  |
| Partner Name     |  |
| Address          |  |
| City, State, Zip |  |
| Home Phone       |  |
| Cell Phone       |  |
| E-Mail           |  |
| JCNA Affiliation |  |
| JCNA Number      |  |



# Registration Form

Jaguar Affiliates Group of Michigan  
**51<sup>st</sup> Annual Concours d'Elegance**  
 Saturday August 25, 2018

Concours d'Elegance entries are open to all Jaguar Owners and Jaguar powered Jaguar Cars. Entries in all *Championship Division* classes and all *Driven Division* classes are judged according to JCNA rules approved for the current year.

**ALL Championship and Driven class entries must be received by August 18<sup>th</sup> 2018**

**Registration Fees:**

- ◆ Championship Division: \$50    ◆ Driven Division: \$50    ◆ Additional Car, either division: \$45    ◆ Display: \$25
- ◆ Display registration will be accepted on the day of show until 11:00 AM for \$30.
- ◆ If you are not a JCNA member we are required to charge a \$5 insurance fee.

| Year                    | Model | Body Style | Color | Class | Fee |
|-------------------------|-------|------------|-------|-------|-----|
|                         |       |            |       |       | \$  |
|                         |       |            |       |       | \$  |
|                         |       |            |       |       | \$  |
|                         |       |            |       |       | \$  |
| <b>Total Entry Fees</b> |       |            |       |       | \$  |

**Mail completed form, together with check or money order (payable to Jaguar Affiliates Group of Michigan), for total amount to:**

Jaguar Affiliates Group of Michigan  
 c/o Pauline Blunt  
 4715 Bell Oak Road, Williamston, MI 48895 USA

|                                 | Qty. |    |
|---------------------------------|------|----|
| Awards Buffet (\$40 per person) |      | \$ |
| Non-JCNA Member Insurance Fee   |      | \$ |
| <b>Total Enclosed</b>           |      | \$ |

**Release of Liability**

JCNA event participation: It is an entrant's privilege to participate in any JCNA sanctioned event held by any JCNA affiliate upon executing proper registration forms and paying published entrance fees. Each affiliate shall be solely responsible for granting entry privileges to each entrant on an individual basis.

I hereby agree to enter the above described Jaguar(s) in the JAGM Concours d'Elegance. In consideration of the right and privilege to enter and participate and other valuable consideration, and intending to be legally bound, I agree to release the Jaguar Clubs of North America (JCNA), Jaguar Affiliates Group of Michigan (JAGM) and the Concours d'Elegance committee from all liability for injuries, damage or loss arising from my entry and attendance in the Concours d'Elegance.

\_\_\_\_\_  
*Signature of Jaguar Owner*

\_\_\_\_\_  
*Date*

## JCNA Concours Classes

| <u>Championship<br/>Classes</u> |                                                                                                                                                                                                                         | <u>Driven<br/>Classes</u> |
|---------------------------------|-------------------------------------------------------------------------------------------------------------------------------------------------------------------------------------------------------------------------|---------------------------|
| C1/PRE                          | Classics (Pre-XK engine) Tourer, OTS, DHC and Saloons: Swallow, SS & SS Jaguar ('27-51)                                                                                                                                 | D1/PRE                    |
| next                            | All Classics (Pre-XK engine) and XK 120, XK 140, XK 150                                                                                                                                                                 | D1/PRE                    |
| C2/120                          | XK 120 (1948-54)                                                                                                                                                                                                        | D1/PRE                    |
| C3/140                          | XK 140 (1955-57)                                                                                                                                                                                                        | D1/PRE                    |
| C4/150                          | XK 150 (1957-61)                                                                                                                                                                                                        | D1/PRE                    |
| C5/E1                           | E-Types, Series 1 (1961-67)                                                                                                                                                                                             | D2/E1                     |
| C6/E2                           | E-Types, Series 1.5 (1968) and Series 2 E-Types (1968-71)                                                                                                                                                               | D3/E2                     |
| C7/E3                           | E-Types, Series 3 (1971-75)                                                                                                                                                                                             | D4/E3                     |
| C8/SLS                          | Early Large Saloons: MK VII, MK VIII, MK IX, MK 10, 420G, (1950-70);<br>Early Small Saloons: MK 1 (2.4 & 3.4), MK 2 Series (2.4, 3.4, 3.8 liter, V8)<br>240, 340; S-Type 3.4S, 3.8S, & Jaguar and Daimler 420 (1955-69) | D5/SLS                    |
| C9/XJ                           | XJ6/12 Series 1 Saloons (1968-73); XJ6/12 Series 2 Saloons and Coupes (1973- 79); Series<br>III XJ6, XJ6 Sovereign and XJ6 VDP (1979-87); Series III V12 and V12 VDP (1979-92)                                          | D6/XJ                     |
| C10/XJ                          | XJ6 (XJ40) Sedans (1987-94), XJ12 (XJ81) (1993-94); XJ6/12/R, (X300/X305) (1995-97)                                                                                                                                     | D7/XJ                     |
| C11/J8                          | XJ8/R Sedans (X308) (1998-2003), XJ8/R Sedans (X350 Alloy) (2004-2009)                                                                                                                                                  | D12/J8                    |
| C12/JS                          | XJ-S/SC (1976 - 1991 Pre-Facelift)                                                                                                                                                                                      | D8/XJS                    |
| C13/JS                          | XJS (1991 - 1996 Facelift)                                                                                                                                                                                              | D9/XJS                    |
| C14/K8                          | XK8 Coupe and Conv. (1996-2006), XKR (1999-2006)                                                                                                                                                                        | D10/K8                    |
| C15/XK                          | XK and XKR Coupe and Conv. (2007-On)                                                                                                                                                                                    | D11/XK                    |
| C16/SX                          | S-TYPE Sedans (1999-2008), X-TYPE Sedans and Estate Wagon (2002-2008)                                                                                                                                                   | D13/SX                    |
| C17/PN                          | Preservation Class (more than 35 years old)                                                                                                                                                                             | none                      |
| C18/PN                          | Preservation Class (20 to 35 years old)                                                                                                                                                                                 | none                      |
| C19/FJ                          | XF Sedans (2008-On), XJ Sedan (2010 - On), XE (2016-On)                                                                                                                                                                 | D14/FJ                    |
| C20/F                           | F-TYPE (2013-On)                                                                                                                                                                                                        | D15/F                     |
| C21/P                           | F-PACE (2016-On), E-Pace, I-Pace (2018-On)                                                                                                                                                                              | D16/P                     |
|                                 | Factory and Privately Prepared Competition Cars                                                                                                                                                                         | S1/PD                     |
|                                 | Modified                                                                                                                                                                                                                | S2/MOD                    |
|                                 | Replica (non-production, Jaguar powered)                                                                                                                                                                                | S3/REP                    |



6/26/18